

InnoCielo Asset Management Module



Solution for Managing the Asset Lifecycle

white paper

Table of Contents

1	Introduction	3
2	Create an Asset-Centric ECM Environment	3
3	Linking Documents to Objects.....	3
4	Linking into Other Business Processes.....	4
5	InnoCielo Asset Management Module – Key Features	5
6	InnoCielo Asset Management Module – Key Benefits	5
7	Availability.....	5
8	BlueCielo ECM Solutions	6
9	Questions?.....	6
10	Contact Info.....	6

1 Introduction

Next to your revenue generating assets, the asset related technical documentation, like process & instrumentation diagrams, specification sheets, standard operating procedures, calculation sheets, etc can be considered strategic assets as well. Especially in case of an emergency you need the appropriate and complete set of technical documentation quickly to resume production. On the other hand, up-to-date technical documentation is required to maintain your license to operate.

So how can you achieve this?

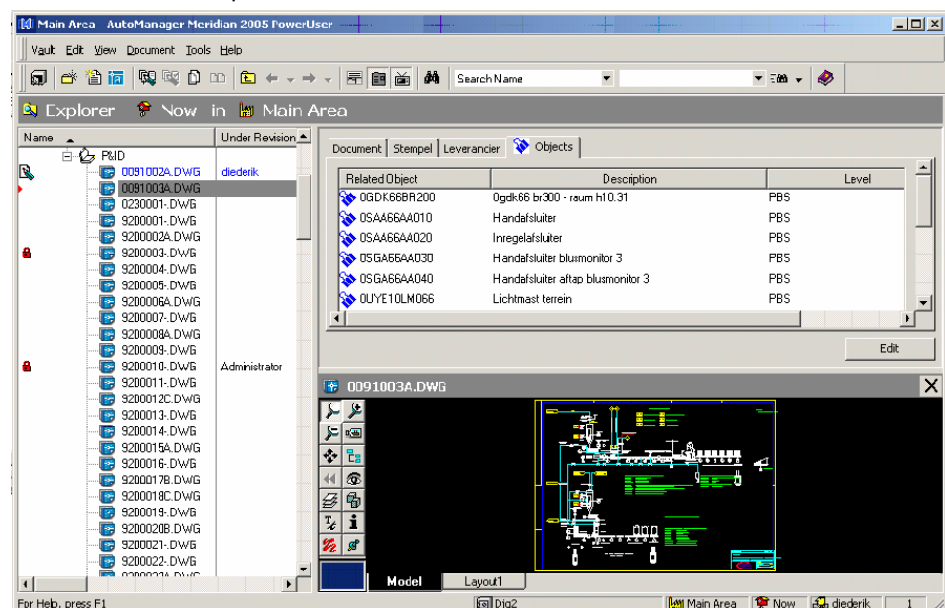
2 Create an Asset-Centric ECM Environment

InnoCielo Meridian Enterprise (formerly AutoManager Meridian) is an Engineering Content Management (ECM) solution used extensively in the process industry to manage technical documentation. One of the key requirements in this industry is the ability to provide and manage the relation between assets and the documentation. This not only enables intuitive search but also reduces as-built costs and ensures that the documentation is consistent with the situation in the field. The latter is required to execute vital processes and thus to maintain the license to operate.

In an average facility there are thousands of assets which are usually identified with a unique number like tag number, functional location number or KKS number. These numbers are usually managed in Maintenance Management or other systems. Such systems lack many ECM functionalities and are, therefore, not suitable to manage the hundred of thousands documents and the relations to assets. Since documents are not only related to physical assets but also to combinations of assets or to activities a more appropriate term is "object-document" relations. The combination of InnoCielo Meridian Enterprise for ECM and the InnoCielo Asset Management Module to manage relations, provide a perfect environment to do the job.

3 Linking Documents to Objects

By managing the object-document relations in the InnoCielo Meridian Enterprise environment (by use of the InnoCielo Asset Management Module) a very powerful usability is offered to find documents by object number. This will dramatically improve your company's efficiency during engineering changes but also during emergency maintenance and inspections.



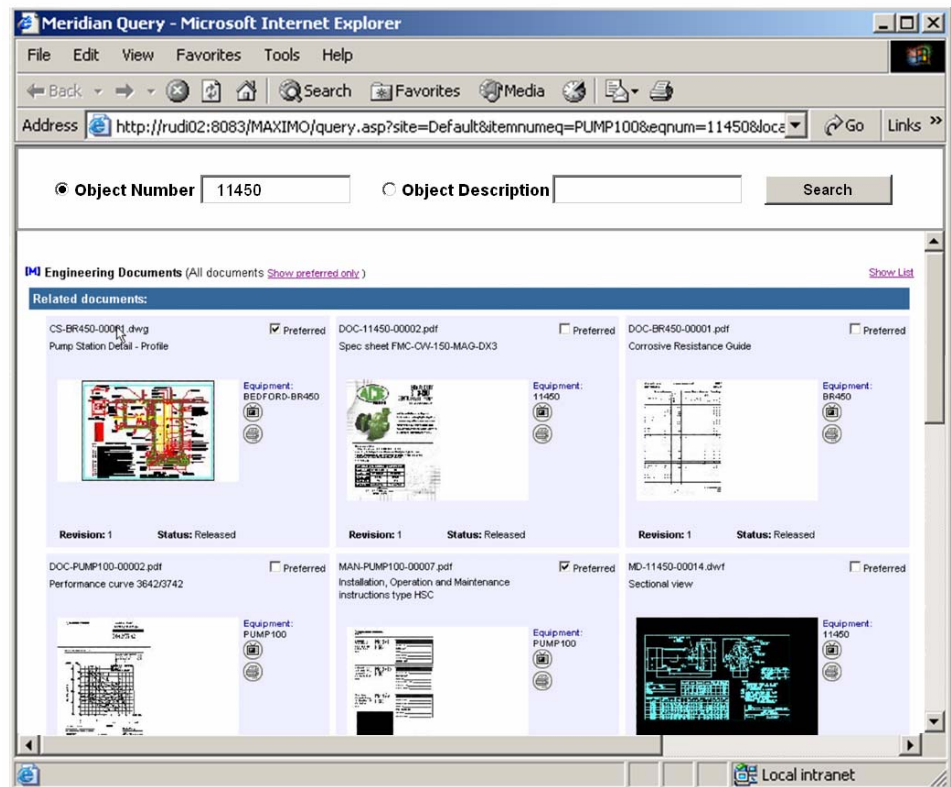
The InnoCielo Asset Management Module provides extensive tools to create and manage relations between technical documents and assets (object numbers). Objects can be imported from your maintenance system or created manually and put into a hierarchical structure, like a plant break down structure.

During engineering the objects can be linked to documents and documents can be linked to objects. For example a process & instrumentation diagram represents multiple assets and therefore needs to be linked to multiple objects. On the other hand for an object like a pump or vessel you have multiple documents. When searching for an object, you immediately want to see all the related documentation. The InnoCielo Asset Management Module offers you the functionality to handle all this.

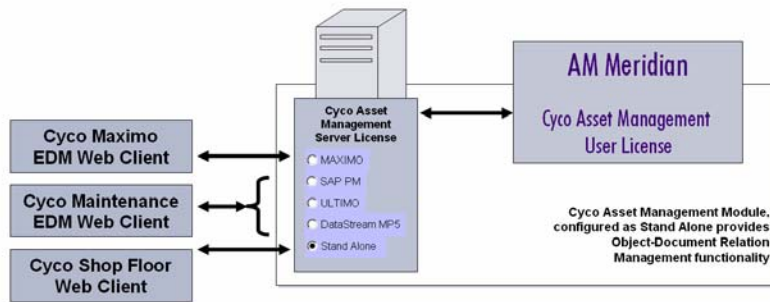
4 Linking into Other Business Processes

The InnoCielo Asset Management Module provides the unique possibility to leverage technical document management within other business processes. The module can be extended with the InnoCielo Shop Floor client, providing your employees the possibility to search manually for an object and find all object-related technical documentation from within an internet browser.

By extending the InnoCielo Asset Management Module, integration with your maintenance management system can be made, bridging the gap between maintenance and engineering. Integrations are available for Maximo and SAP PM, and are in development for Ultimo and Datastream. From within the maintenance system users have zero search time for the related technical documentation, for example when viewing a work order, equipment or job plan.



Both users of the InnoCielo Shop Floor client and users of the maintenance management system will see the revisions and current status of the document as well as the document itself, via InnoCielo viewer technology. Users can redline drawings and add comments based on the performed maintenance tasks. Interdepartmental communication is greatly enhanced as the engineering department is immediately notified of comments and provided with the remarks.



5 InnoCielo Asset Management Module – Key Features

InnoCielo Meridian Enterprise can be used through various clients, among which the InnoCielo Meridian Enterprise Power User client, providing the most extensive functionality for users. The InnoCielo Asset Management Module is intended to create and manage the relation between objects and documents, from within the InnoCielo Meridian Enterprise Power User client. Objects can be defined by the user or imported from the maintenance management system and presented in a logical hierarchical structure, like for example the plant break-down structure. The InnoCielo Asset Management Module offers the following key features:

- 1) Create objects within the hierarchical structure
- 2) Representation of the hierarchical structure within the InnoCielo Power User interface
- 3) Store object properties and provide a status
- 4) Move objects within the hierarchical structure
- 5) Linking multiple documents to one object
- 6) Linking multiple objects to one document
- 7) View the related documents per object
- 8) View the related objects per document (where used)
- 9) Search by object, both through Quick Find and through Advanced Search

6 InnoCielo Asset Management Module – Key Benefits

The InnoCielo Asset Management Module provides the tools to easily create and maintain the hundred of thousands relations between objects and documents. This in return enables users to:

- Intuitively find technical documents using an asset identifier as search key
- Identify which set of documents is subject to change due to a plant change
- Gradually upgrade the quality (completeness, reliability) of the technical asset information
- Have insight in the quality of the set of legally required documents.

Additionally the module can be easily extended to integrate InnoCielo Meridian Enterprise with your maintenance management system, plus it can be extended with a web-based InnoCielo Shop Floor client.

7 Availability

The InnoCielo Asset Management Module is available worldwide as part of the InnoCielo Meridian Enterprise suite for Asset Information Management. To learn more about InnoCielo Meridian Enterprise and our industry-specific business applications, please contact BlueCielo ECM Solutions at +31 70 413 37 00 (EMEA/APAC) or via email at info@bluecieloecm.com. Or email Edwin van Dijk, Product Manager Asset Information Management Solutions at edwin.van.dijk@bluecieloecm.com.



8 BlueCielo ECM Solutions

BlueCielo ECM Solutions (formerly Cyco Software) provides Engineering Content Management (ECM) solutions for multiple vertical industries, including utilities, oil & gas, petrochemical, pharmaceutical, government, transportation and process and discrete manufacturing. BlueCielo has over two decades of industry experience with more than 275,000 users in 50+ countries worldwide. The company has offices in the USA, UK, Russia, Germany, and The Netherlands and an extensive global network of established partners. BlueCielo ensures a high level of service and support on a truly worldwide scale for its leading software solutions InnoCielo Meridian Enterprise and InnoCielo Teamwork (formerly AutoManager Meridian and AutoManager TeamWork).

9 Questions?

For further information on this subject or about BlueCielo, please feel free to contact us by phone, email info@bluecieloecm.com or visit our websites.

10 Contact Info

Corporate Headquarters BlueCielo
Handelskade 49
2288 BA Rijswijk
The Netherlands
T +31 70 413 37 00
F +31 70 413 37 01
info@bluecieloecm.com
www.bluecieloecm.com

Americas
2400 Lake Park Drive
Suite 450
Atlanta, GA 30080
U.S.A.
Toll-Free 800 323 29 26
T +1 404 634 33 02
F +1 404 633 46 04
info@bluecieloecm.com
www.bluecieloecm.com

Europe, Asia, Pacific Rim,
Middle East, Africa
Handelskade 49
2288 BA Rijswijk
The Netherlands
T +31 70 413 37 00
F +31 70 413 37 01
info@bluecieloecm.com
Benelux: www.bluecielo.nl

DACH
Essener Strasse 5
46047 Oberhausen
Germany
T +49 208 305 85 00
F +49 208 305 85 025
info@bluecieloecm.com
www.bluecielo.de

United Kingdom, Ireland
Empress Business Centre
380 Chester Road
Manchester
M16 9EA
United Kingdom
T +44 161 877 55 79
F +44 161 877 55 80
info@bluecieloecm.com
www.bluecielo.co.uk

Russia, Russia and CIS countries
Korolev Street 6
249030 Obninsk
Kaluga region,
Russia
T +7 (48439) 63079
F +7 (48439) 65095
info@bluecielo.ru
www.bluecielo.ru